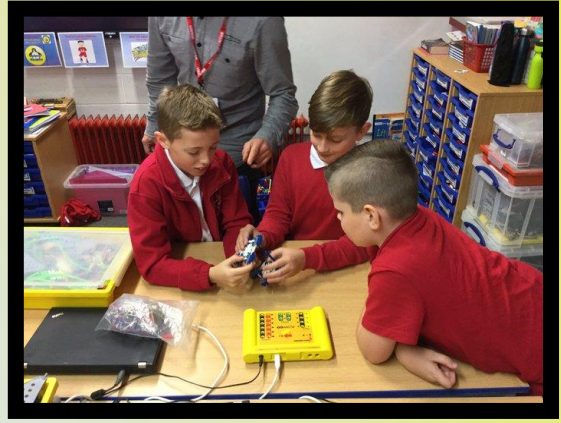


Parent Information

September 16th

A Caring, Respectful and Open Environment, where Success and Opportunity flourish



Please find update information regarding Covid-19.

Please visit our website
www.pentrepoethprimary.co.uk

Kind regards,
Cofion cynnes,

Dean Taylor
Headteacher



Pentrepoeth Primary School

Cwm Cwddy Drive, Rhiwderin Heights, Bassaleg, Newport NP10 8JN

Tel: 01633 896101

Fax: 01633896367

email: Pentrepoeth.primary@newport.gov.uk

website: www.pentrepoethprimary.co.uk

Headteacher: Dean Taylor B.A.(Hons), P.G.C.E., L.P.S.H.

Deputy Headteacher: Tina Jenkins B.Ed. (Hons)

17th September 2020

Dear Parent and Carer,
Annwyl Rhieni,

I am writing to provide you with some updated information regarding covid-19.

Many parents have e mailed or telephoned the school asking for clarification about whether they should get their child tested for covid-19. I hope the charts and grids in this short Parent Information newsletter are helpful to you.

Positive Cases

There may be times in the coming weeks when on advice from Public Health Wales , Environmental Health and Newport City Council I may have to inform parents that a child or a member of staff has tested positive. This may be during the evening, at the weekend or during the day. Please do not rely on any other forum for your news related to school cases. If I need to communicate I will do so via a letter using our text messaging system. It is vitally important that you follow the advice given if a child is asked to self isolate. If instructed to do so I may have to send home a contact group during the school day and parents will be asked to pick up children from school.

Symptoms that develop during the day

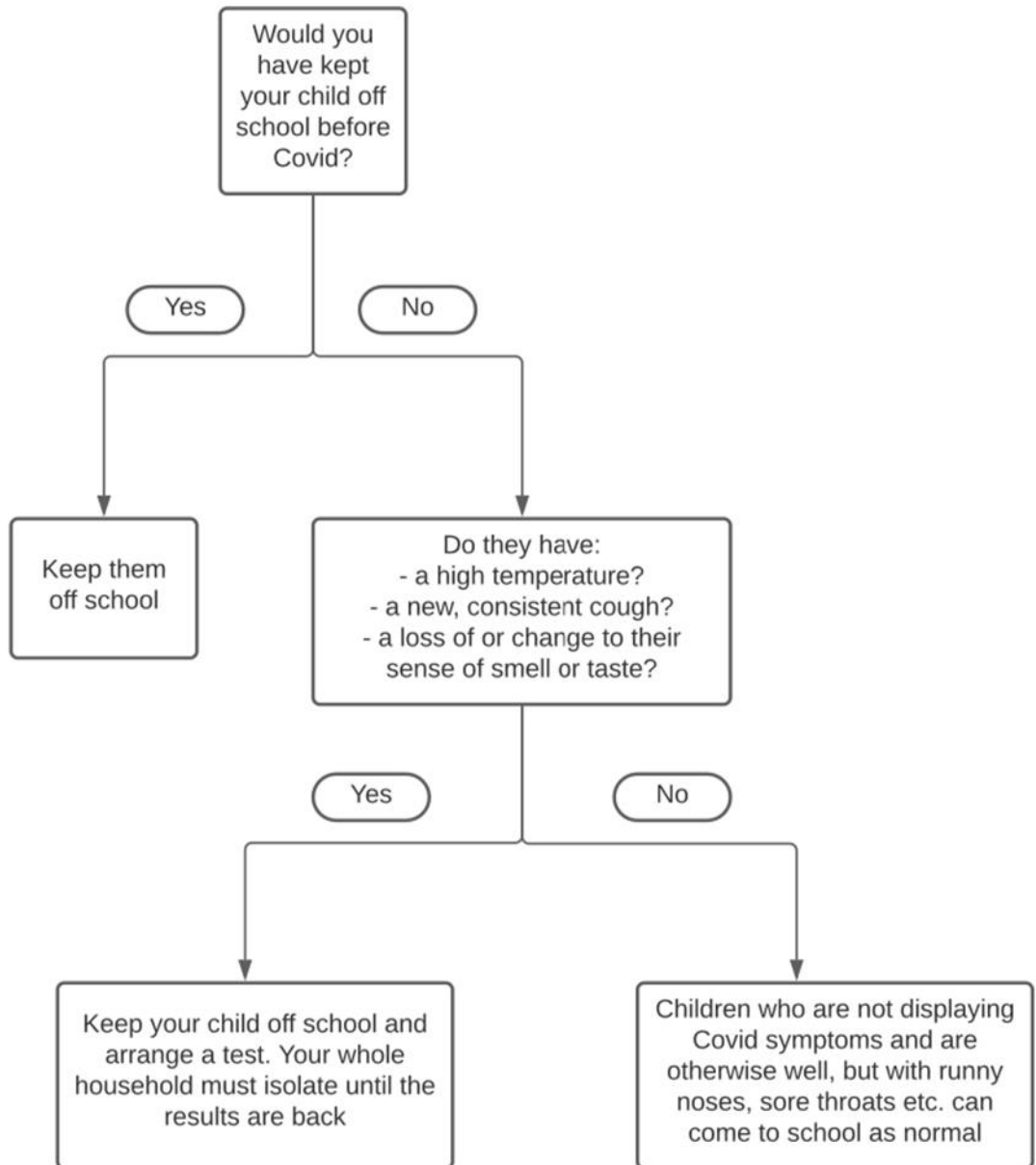
There may also be times during the school day when we may ring if individual children have exhibited symptoms of covid-19 as below and ask you to collect your child. All siblings will need to be collected and if a child is symptomatic parents are advised to book a test and the household self- isolate until a negative result is returned. Children may not return to school until a negative result has been seen by the school or a 10 day period of self -isolation has taken place from the first day of symptoms.

Covid-19 Symptoms

- **High temperature** - This means they feel hot to touch on your chest or your back.
- **New continuous cough** - This means coughing a lot for more than an hour or 3 continuous coughing episodes in 24 hours.
- **A loss or change to their sense of taste or smell** -This means they have noticed they cannot smell or taste anything.



Covid-19 Should a child stay off school?



Covid-19 Related Pupil Absence - A Quick Reference Guide

What do I do if...	Action needed	Return to school when...
<p>My child has Covid-19 symptoms:</p> <ul style="list-style-type: none"> • High temperature This means they feel hot to touch on your chest or your back. • New continuous cough This means coughing a lot for more than an hour or 3 continuous coughing episodes in 24 hours. • A loss or change to their sense of taste or smell. This means they have noticed they cannot smell or taste anything. 	<ul style="list-style-type: none"> • DO NOT COME TO SCHOOL • Symptomatic child to isolate for 10 days. • Isolate the rest of the household for 14 days (a household is all adults and children living in the same property or your extended household if you have created one). • Parent to arrange to get child tested. • INFORM SCHOOL IMMEDIATELY 	<ul style="list-style-type: none"> • Test comes back negative. • If no test is taken child must remain off school for 10 days, whether or not they are feeling well before that point. • If no test is taken, other household contacts must continue to isolate for 14 days, whether or not they are feeling well
<p>My child has been sent home from school with Covid-19 symptoms.</p>	<ul style="list-style-type: none"> • Collect all siblings from Pentrepoeth and any other schools. • Symptomatic child to isolate for 10 days. • Isolate the rest of the household for 14 days (a household is all adults and children living in the same property or your extended household if you have created one). • Parent to arrange to get child tested. • INFORM SCHOOL IMMEDIATELY ABOUT TEST RESULT. 	<ul style="list-style-type: none"> • Test comes back negative. • If no test is taken child must remain off school for 10 days, whether or not they are feeling well before that point. • If no test is taken, other household contacts must continue to isolate for 14 days, whether or not they are feeling well
<p>My child tests positive for Covid-19.</p>	<ul style="list-style-type: none"> • DO NOT COME TO SCHOOL. • INFORM SCHOOL IMMEDIATELY ABOUT TEST RESULT. • Contact school to agree a date for return. Minimum of 10 days isolation after start of symptoms. 	<ul style="list-style-type: none"> • To be agreed with Head teacher.
<p>My child tests negative for Covid-19.</p>	<ul style="list-style-type: none"> • INFORM SCHOOL IMMEDIATELY ABOUT TEST RESULT. • Contact school to agree a date for return. 	<ul style="list-style-type: none"> • Test comes back negative and child is well (when symptoms have gone in line with normal sickness procedures).
<p>My child is ill with symptoms not linked to Covid-19.</p>	<ul style="list-style-type: none"> • Follow the usual school absence procedures – ring the school office on 01633 896101 or e mail pentrepoeth.primary@newport.gov.uk 	<ul style="list-style-type: none"> • Feeling well or normal sickness absence procedures (e.g. 48 hours after last episode of diarrhoea or vomiting).



What do I do if...	Action needed	Return to school when...
Someone in my child's household has Covid-19 symptoms.	<ul style="list-style-type: none"> • DO NOT COME TO SCHOOL. • Child to isolate for 14 days. • Isolate the whole household for 14 days. • Symptomatic household members to get tested. • INFORM SCHOOL IMMEDIATELY ABOUT TEST RESULT. 	<ul style="list-style-type: none"> • The symptomatic person must receive a negative test result or full isolation period be completed before a child can return to school.
Someone in my household tests positive for Covid-19.	<ul style="list-style-type: none"> • DO NOT COME TO SCHOOL. • INFORM SCHOOL IMMEDIATELY ABOUT TEST RESULT. • Contact school to agree a date for return. • Isolate the whole household for a minimum of 14 days. • Anyone who becomes symptomatic must get tested. 	<ul style="list-style-type: none"> • The child has completed 14 days of isolation. (A negative test for the child within the 14 days does not mean they can return to school)
NHS Wales Test, Trace, Protect Service has identified that my child has been in close contact with someone with confirmed symptoms of Covid-19.	<ul style="list-style-type: none"> • DO NOT COME TO SCHOOL. • Follow advice from Test, Trace, Protect Service. • INFORM SCHOOL IMMEDIATELY. • Contact school to agree a date for return. Minimum of 14 days isolation. 	<ul style="list-style-type: none"> • The child has completed 14 days of isolation.
Family/my child has travelled and has to self-isolate as a period of quarantine.	<ul style="list-style-type: none"> • DO NOT COME TO SCHOOL. • Consider Welsh Government travel advice regarding quarantine and exempt countries. • INFORM SCHOOL IMMEDIATELY. • Isolate the whole household for 14 days from arrival back in the UK. 	<ul style="list-style-type: none"> • The quarantine period of 14 days has been completed.
My child's contact group has been sent home/told to isolate due to a Covid-19 outbreak in school.	<ul style="list-style-type: none"> • DO NOT COME TO SCHOOL. • Please log into Google Classroom (years 2 to 6) or See Saw (Nursery to Year 1) to continue with Home Learning. • Other members of the household (siblings/parents etc.) can continue to go to school and work unless a household (or extended household) member, including the child, has symptoms or receives a positive test result. 	<ul style="list-style-type: none"> • School will inform you when your child can return.



Household - A group of adults and children living in the same property.

Extended Household - Up to four households who meet, act, and are treated as though they are one household (e.g. do not maintain social distancing and all have to self-isolate if one person becomes symptomatic).

Self-Isolation/Isolation - Stay at home and do not leave the house for 14 days. Do not visit GP, pharmacy or hospital. You must not go out to buy food or other essentials. Do not go to work, school or public areas. Do not use public transport or taxis.

14 day period - This starts from when the first person in the household or contact group becomes ill.

10 day period - This starts from the day symptoms begin.

Contact Group - School class/year group 'bubble'.

NHS Wales Test, Trace, Protect - This covers Wales' approach to testing in the community and tracks people that you have been in contact with in order to protect family, friends and the community. They may trace you if you have been in contact with someone who has tested positive.

Further information can be found at:

<https://gov.wales/coronavirus>

Please also find below links to some videos on you tube regarding when and how to get your child tested:

When to get your child tested?

<https://www.youtube.com/watch?v=TTDbNz-1F3c>

How to get your child tested..

<https://www.youtube.com/watch?v=TSwrlt1TIkY>

I hope you have found this leaflet useful.

As always I will keep you up to date with developments and we will continue to work together in partnership in the best interests of the safety and wellbeing of our pupils.

If we can help in any way please ring us at school.

Kind regards,

Dean Taylor
Headteacher

